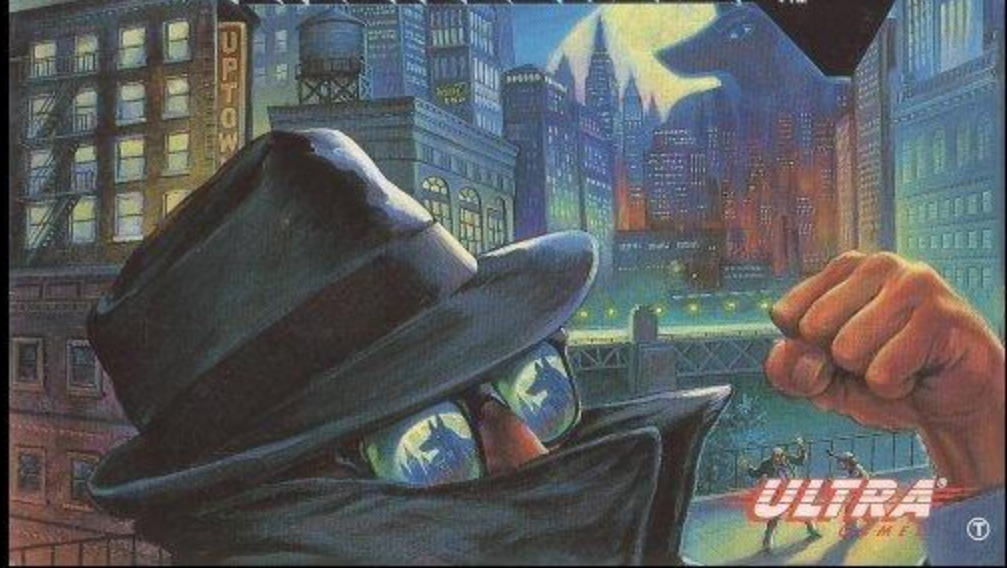


HOW TO PLAY

NES-8Y-USA

# NIGHTSHADE™



## ULTRA SOFTWARE CORPORATION LIMITED WARRANTY

Ultra Software Corporation warrants to the original purchaser of this Ultra software product that the medium on which this computer program is recorded is free from defects in materials and workmanship for a period of ninety (90) days from the date of purchase. This Ultra software program is sold "as is," without express or implied warranty of any kind, and Ultra is not liable for any losses or damages of any kind resulting from use of this program. Ultra agrees for a period of ninety (90) days to either repair or replace, at its option, free of charge, any Ultra software product, postage paid, with proof of date of purchase, at its Factory Service Center.

This warranty is not applicable to normal wear and tear. This warranty shall not be applicable and shall be void if the defect in the Ultra software product has arisen through abuse, unreasonable use, mistreatment or neglect. THIS WARRANTY IS IN LIEU OF ALL OTHER WARRANTIES AND NO OTHER REPRESENTATIONS OR CLAIMS OF ANY NATURE SHALL BE BINDING ON OR OBLIGATE ULTRA ANY IMPLIED WARRANTIES APPLICABLE TO THIS SOFTWARE PRODUCT, INCLUDING WARRANTIES OF MERCHANTABILITY AND FITNESS FOR A PARTICULAR PURPOSE, ARE LIMITED TO THE NINETY (90) DAY PERIOD DESCRIBED ABOVE. IN NO EVENT WILL ULTRA BE LIABLE FOR ANY SPECIAL INCIDENTAL OR CONSEQUENTIAL DAMAGES RESULTING FROM POSSESSION, USE OR MAJUNCTION OF THIS ULTRA SOFTWARE PRODUCT.

Some states do not allow limitations as to how long an implied warranty lasts and/or exclusions or limitations of incidental or consequential damages to the above limitations and/or exclusions of liability may not apply to you. This warranty gives you specific rights, and you may also have other rights which vary from state to state.

### ADVISORY - READ BEFORE USING YOUR NES

A very small portion of the population may experience epileptic seizures when viewing certain kinds of flashing lights or patterns that are commonly present in our daily environment. These persons may experience seizures while watching some kinds of television pictures or playing certain video games. Players who have not had any previous seizures may nonetheless have an undetected epileptic condition. We suggest that you consult your physician if you have an epileptic condition or if you experience any of the following symptoms while playing video games: altered vision, muscle twitching, other involuntary movements, loss of awareness of your surroundings, mental confusion and/or convulsions.

### WARNING: DO NOT USE WITH FRONT OR REAR PROJECTION TV

Do not use a front or rear projection television with your Nintendo Entertainment System® (NES) and NES games. Your projection television screen may be permanently damaged if video games with stationary scenes or patterns are played on your projection television. Similar damage may occur if you place a video game on hold or pause. If you use your projection television with NES games, Nintendo will not be liable for any damage. This situation is not caused by a defect in the NES or NES games; other fixed or repetitive images may cause similar damage to a projection television. Please contact your TV manufacturer for further information.

This game is licensed by Nintendo® for play on the



Nintendo® and Nintendo Entertainment System® are registered trademarks of Nintendo of America Inc.



THIS OFFICIAL SEAL IS YOUR ASSURANCE THAT NINTENDO HAS REVIEWED THIS PRODUCT AND THAT IT HAS MET OUR STANDARDS FOR EXCELLENCE IN WORKMANSHIP, RELIABILITY AND ENTERTAINMENT VALUE. ALWAYS LOOK FOR THIS SEAL WHEN BUYING GAMES AND ACCESSORIES TO ENSURE COMPLETE COMPATIBILITY WITH YOUR NINTENDO ENTERTAINMENT SYSTEM®. ALL NINTENDO PRODUCTS ARE LICENSED BY SALE FOR USE ONLY WITH OTHER AUTHORIZED PRODUCTS BEARING THE OFFICIAL NINTENDO SEAL OF QUALITY.

## WELCOME TO THE WORLD OF ULTRA!

You're now the proud owner of **Nightshade™** from Ultra, an exciting action-adventure game for the Nintendo Entertainment System®. We suggest that you read the following instructions thoroughly before stepping into the darkness of the night.

## TABLE OF CONTENTS

INTRODUCTION .....	4
CONTROLS .....	8
SCREEN ELEMENTS .....	9
USING THE ICON MENU .....	10
THE BATTLE SCENES .....	14
A Q&A GUIDE TO ADVENTURE GAMES .....	15





## CRIME HAS A NAME . . .

### And they call it Sutekh!

Pssst, come 'ere. Don't be afraid, I ain't gonna hurt ya. My name's Daryl Woolridge, but my friends call me "Flamingo." That's on account of my wooden leg here. Lost it a few years back when some runaway shopping cart slammed into me. Pinned my right leg upside Al's Grocery. But that's another story. You're new here, ain't ya? Let me tell ya 'bout Metro City. Dark times have settled here. There was lots a growth and prosperity in the 70's and 80's, but that's led us to crime and corruption. Now summa the more powerful crime bosses have joined togedder under the control of 'dis new guy — Sutekh.



At first a few of the crime lords refused to give up their territories. Man, there was some fierce battles on these streets, I'm tellin' ya. But this Sutekh's dudes are tough. They mopped up guys like "Tonsils" McCurry who ran the bootleg video 'n CD business. Sutekh punished anyone who got in his way, and I'm here to tell ya, some of the stuff he done wasn't pretty. Sheesh, I remember the trap he set for Madame Curio. . . ah, but I'm gettin' off track agin.

Word spread of Sutekh's nastiness, until one brave guy finally came to Metro city's aid. It was this costumed superhero-type guy, Vortex, he called 'isself, and he had the coolest high-tech weapons an' stuff. He had all sorts of gadgets he used to track down Sutekh. When he fin'ly got him, they had the mother of all brawls. Man, it's the stuff of legends, I kid you not. I'll tell you sumptin' else. Ol' Flamingo here seen the whole thing. Naw, it's true! That Vortex had these force gloves that packed a mean punch. He bashed Sutekh in the chops and sent 'im clean across the street! Unfortunately, he wasn't good enough. Sutekh and 'is thugs out and out overpowered Vortex. But even outgunned and overpowered, Vortex fought bravely to the end. I was there right before he lost it, and I heard him tell Sutekh "You haven't won yet Sutekh, there will be others . . ." I swear I did. Then they drug him off somewhere. Metro City ain't heard from Vortex since.

Well, that's all ol' news now. Word on the street is that there's a new guy around. Maybe Vortex was right after all. Some guy was tellin' me the other day that he seen a dark figure stalking the alleys, ambushing the criminal types who run the action around 'ere. The Police Chief here, a tuff guy they call Dave "Mr. Law" Kirtley, has made no comment on record, but insiders say the police are eager to gain Nightshade's cooperation in ridding the city of Sutekh's influence. The Metro Press has reporters digging into the background of Nightshade, but so far they have asked more questions then they've answered. "Scuse me, there's my bus. I gotta run.

*Who is Nightshade? Will he be able to succeed where the mighty Vortex failed, or is this just another dashed hope for the fair people of Metro City?*

## THE STORY OF NIGHTSHADE

### A Bookworm With A Secret

Mark Gray is an encyclopedia researcher for Global Encyclopedia, Inc., the Metro City based publishers of one of the all-time best-selling reference guides available. His passion for social and criminal history is surpassed only by his passion for adventure. This fixation guided him to the development of a crime-fighting alter-ego. Mark Gray sheds his bookish day-job persona, dons a trench coat, fedora and shades and steals into the dusk as the adventurous crime fighter: NIGHTSHADE!

### From Darkness Comes Nightshade

Mark Gray followed Vortex's actions and escapades for years. He knew everything about the hero, except his identity and hideout. Gray believed that Vortex made a grave error by underestimating Sutekh. After the cataclysmic battle between the two, Mark vowed to avenge his defeated idol, Vortex. Mark slips into his trench coat, fedora and shades to protect his identity. With his exceptional physical training and keen intellect as his only weapons he sets out to continue Vortex's goal of a crime-free Metro



City. He patrolled the inner city neighborhoods, gathering information, searching for weapons left behind by Vortex, and, when necessary, apprehending would-be muggers, drug dealers and thieves. His street brawls led to confrontations with Sutekh's minions: mummies and jackals, King Rat, Goliath and his thugs, and the League of Unreasonable Gentlemen, to name a few. Television and newspaper reports carried stories of the new, mysterious crime-fighter in Metro City, and the Nightshade legend was born!

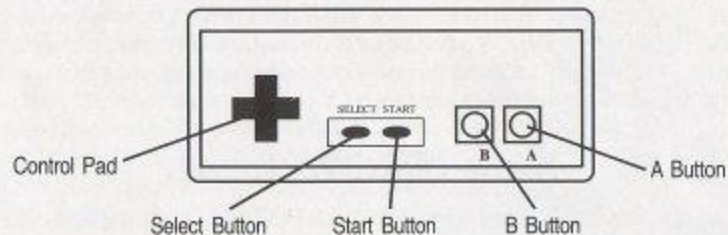
## In the Claws of Sutekh

It wasn't long before Sutekh and Nightshade crossed paths. The evil lunatic had his men ambush Nightshade, and prepared to remove the last obstacle between himself and total control of Metro City. Even now, Nightshade lies bound somewhere under the city, facing certain death. Can he escape a tragic end, or has Metro City's newest crime fighter met his match?

Now is your chance to face off against the power of Sutekh. With over 100 screens to search, you'll have to keep your eyes peeled for clues to the whereabouts of the evil Sutekh. Be aware of your surroundings and stay sharp — you never know what fiendishness lurks around the corner!



## NIGHTSHADE'S COMMAND CONTROLS



**Control Pad** — Use to move Nightshade in eight directions. Also used to move the cursor box over an item.

**Select Button** — Press to call up the Icons Menu.

**Start Button** — Press to pause the action. Press again to start the action.

**B Button** — Press to instantly OPERATE something. Also to cancel an order in the Icons Menu.

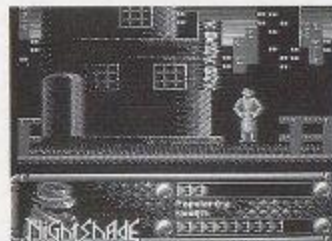
**A Button** — Press to activate an order in the Icons Menu. Also used during the game to examine objects. Just press the button and the EXAMINE option appears, along with the cursor box. Move the box over an item and press the A button again. For more information about the EXAMINE option, see the next section about the Icons Menu. (Also press to reduce the delay in waiting for text to finish printing in the text boxes.)

## RECOGNIZING THE ELEMENTS

Nightshade

Popularity Gauge

Health Gauge



**Nightshade** - This is our hero, the protector of the honest citizens of Metro City.

**Popularity Gauge** - This is the measure of our hero's recognition by the citizens. When he does a good deed, word spreads of his actions. With a high POPULARITY, Nightshade will find it easier to get cooperation from the public. Beware, though, because failing to commit a good act can lower POPULARITY. With a bad reputation, Nightshade will have a difficult time ridding the city of Sutekh.

**Health Gauge** - This bar measures Nightshade's health. If his strength runs out, Sutekh's forces will capture him and place him in an escape-proof trap. Once trapped, our hero will meet his untimely doom, unless you can figure out a way to free Nightshade!

## ACTING ACTIVELY INTERESTED IN INTERACTING WITH THE INTERACTIVE ICONS MENU ACTIVITIES

### Or: how to do stuff in the game . . .

Nightshade has many resources at his command. To see what they are, press the Select button. This brings up the Icons Menu, which has ten buttons. From here you control much of Nightshade's activities in the game. The name of the active icon (if any) will appear in the top box on the right side of the screen.



**Examine** - This brings up the cursor. It looks like a box with cross-hairs. Move it over an object and press the A button to learn more about an item. Notice that as you move the cursor with the Control Pad, an object name may appear in the box in the lower right corner of your screen. Here's a helpful tip for you: if a name doesn't appear, Nightshade will not have information for you. If you aren't sure if an item is important, try to EXAMINE it. If you don't know whether an item is just part of the background, then activate the cursor and move it around until a name appears in the lower right box. You may also EXAMINE items in your inventory.



**Pick Up** - Move the cursor over the item you want to PICK UP, then press the A button. If you change your mind, press the B button. If Nightshade can't PICK UP an item, or if he isn't close enough, the game will tell you.



**Operate** - Sometimes Nightshade can OPERATE an item, even though he may not be able to PICK UP the item or USE it. For example, if you examine a room and find a light switch, you can select OPERATE and then move the cursor over the light switch. (Make sure you're standing next to the item you're trying to operate.) Pressing the A button will cause our hero to operate the light switch, thus turning the light on or off. This won't happen, however, if the bulb has burned out.



**Use** - This works like OPERATE. To USE an item that Nightshade has in his possession, highlight USE and press the A button. The Item list will appear, and you can select an item to USE. If an item has to be USED with something else, then you will see the cursor appear again. Move the cursor over the object you want to USE your item with or on. For example, pretend Nightshade has a key in his item list. He comes to a door and tries to go through it, but a message appears saying the door is locked. You would select the USE button from the Icons Menu. This brings up the item list. Using the Control Pad, you highlight the Key and press the A button. The menu goes away and the cursor appears on the screen. You then move the cursor over the door and you see the word "LOCK" appear in the box in the lower right corner. Press the A button to USE the key on the lock, and you see the door open!





**Items** - This option lets you see all of the items which Nightshade has picked up during his adventures.



**System** - This contains the game controls. From this menu you can turn sound effects and music on or off. Just highlight the SFX or MUSIC box and press the A button to toggle between ON or OFF. You will also see a box in the lower left corner. This tells you how much of the game you have finished. For example, if you're halfway through, it displays 50%. To return to the game, select OK. To leave the game select QUIT.



**Jump** - Select this box to have Nightshade JUMP across something. If there is nothing to JUMP over, he won't.



**Fight** - Of course, what superhero ever wiped out crime without an occasional scuffle? When you encounter some wrongdoing, select FIGHT. The cursor will appear. Move it over the evil-doer and press the A button. The Nightshade logo will flash on your screen and the battle sequence will begin.



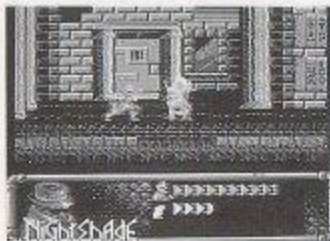
**Talk** - Sometimes you can gather information from the citizens of Metro City. One way to do this is to select the TALK icon and try to engage them in conversation. Another way is to buy information by giving them money (USE money on the person). Another way is to sit down with a pen and paper and write them a nice letter. We don't recommend this method. It takes a long time for a reply, and they aren't real people anyway, so you would look rather silly doing it.



**Cancel** - This CANCELS the Icons Menu and lets you go back to whatever you were doing before.

## FIGHTING OFF THE ENEMIES OF FREEDOM

When the time comes, you'd better be prepared to fight. Sometimes the forces of evil don't understand reasoning and fair play. When this happens, Nightshade's logo will flash on the screen and the battle sequence will begin!



### Battle Controls:

Control pad = Move  
B button = Punch  
A button = Jump  
B button + Up = Kick  
Control pad down = Duck!

**Nightshade** - The bravest superhero in Metro City — and the only one currently working.

**Enemy** - The enemy.

**Strength Bars** - These show the power left for Nightshade and his foes. When our hero's power is out, he is captured by Sutekh and placed in a death-trap. If you're lucky, you'll free him and continue the adventure!

## HOW TO HANDLE THE SUPER SLEUTHING OF A SUPER DETECTIVE

### A guide for the beginning adventure game player

Adventure games are different from arcade games. The object isn't just to shoot everything in sight and rack up a gazillion points. Some adventure games don't even use points. They require you to solve puzzles or problems and try to achieve a final goal. For example, the goal might be to free Metro City of the evil Sutekh. To do this, you may have to solve a lot of smaller problems along the way. There are common questions that new adventure gamers have, so we'll try to answer them for you.

**Q:** What good does it do to EXAMINE something?

**A:** EXAMINE tells you if an item has a special feature. For example, if you examine a desk, you might receive a message that says "Nightshade finds a statue of a golden yak." Another way EXAMINE is useful is to select the EXAMINE option and move the cursor around the screen. If an item has a name that appears in the item box in the lower right corner, then it is a clue that something can be done to or with that item.



**Q:** What should I do with items that I find?

**A:** If you can pick them up, do. You never know when you'll need an item that you saw once and left behind. For example, after battling all of the Hideous Otter-headed Jungle Beasties, then freeing the Princess and saving the farmer's son, you may earn a voyage across the Silver River to the Wizard's Keep. Upon entering the Keep and ascending the Stairs Of Amazing Girth, you might encounter the Knight of Daze, who tells you that the Wizard will only see you if you present a gift of gold. Now don't you wish you picked up that yak in the desk?

**Q:** Is the TALK function useful, or just a distraction?

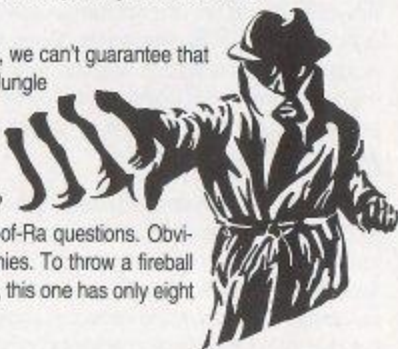
**A:** Well, if you had talked to the citizens of Metro City, we can't guarantee that you would learn that there are no Otter-headed Jungle Beasties in this game, let alone a Knight of Daze. However, they might have information about Vortex and his secret hideout . . .

**Q:** What about the Staff of Ra? What do I do with it?

**A:** This is one of those typical adventure-game-Staff-of-Ra questions. Obviously it's used to fire fireballs at Egyptian-based enemies. To throw a fireball press UP and the B button. Like any other Staff of Ra, this one has only eight shots, so use them wisely.

**Q:** What do I do when I get stuck?

**A:** We recommend throwing your arms up in despair and going outside to play in the fresh air, but if you really want to stick with it, then just try lots of new combinations. For example, if you



come to a wall of flame that prevents further progress, try EXAMINE on items around you. Maybe something like a giant candle is in the room. You might think "Hey, candles produce flames, and there is a giant wall of flame in my way." Next you could try to USE something on the candle, or try to OPERATE the candle. Maybe the candle is really a lever that turns the wall of flame off and on.

**Q:** What's the deal with the Personality gauge?

**A:** Being a superhero these days is very difficult. You want to help rid your city of evil, but sometimes the people you're trying to help don't know that if you don't have a good reputation. If your Personality level is higher, the citizens will recognize you and cooperate. They may be more willing to give you information about the bad guys. You can raise your Personality level by helping citizens who are being mugged or are trapped in burning buildings. Just being polite is a nice way to earn a good reputation, too. Also, proper behavior — such as paying for things you buy from stores — is very important.

**Q:** I've tried everything I can think of, but I'm still unable to go any further in the game. Is there anything I can do?

**A:** One idea is to enlist the help of a friend or family member. Sometimes when we try to solve a problem it helps to get another person's insight. Everyone thinks a little differently, so a sticky situation for you might be more obvious to someone else, and vice versa. Adventure games are as much fun for groups as they are for one player.

If all else fails, call the Ultra Game Counselor  
Department. Our phone number is: (708) 215-5111.

## Treat Your Ultra Game Pak Carefully

- This Ultra Game Pak is a precision-crafted device with complex electronic circuitry. Avoid subjecting it to undue shock or extremes of temperature. Never attempt to open or dismantle the Game Pak.
- Do not touch the terminal leads or allow them to come into contact with water or the game circuitry will be damaged.
- Always make sure your NES Control Deck is SWITCHED OFF when inserting the Game Pak or removing it from the NES.

## COMPLIANCE WITH FCC REGULATIONS

This equipment generates and uses radio frequency energy and if not installed and used properly, that is, in strict accordance with the manufacturer's instructions, may cause interference to radio and television reception. It has been type tested and found to comply with the limits for a Class B computing device in accordance with the specifications in Subpart J of Part 15 of FCC Rules, which are designed to provide reasonable protection against such interference in a residential installation. However, there is no guarantee that interference will not occur in a particular installation. If this equipment does cause interference to radio or television reception, which can be determined by turning the equipment off and on, the user is encouraged to try to correct the interference by one or more of the following measures:

- Reorient the receiving antenna.
- Relocate the NES with respect to the receiver.
- Move the NES away from the receiver.
- Plug the NES into a different outlet so that computer and receiver are on different circuits.

If necessary, the user should consult the dealer or an experienced radio/television technician for additional suggestions. The user may find the following booklet prepared by the Federal Communications Commission helpful: *How to Identify and Resolve Radio-TV Interference Problems*. This booklet is available from the U.S. Government Printing Office, Washington, DC 20402. Stock No. 004-000-00345-4.





Nightshade™ is a trademark of Ultra Software Corporation.  
ULTRA® and ULTRAGAMES® are registered trademarks of  
Ultra Software Corporation.

© 1991 Ultra Software Corporation.

All Rights Reserved.

Printed in Japan.

Ultra Software Corporation 900 Deerfield Parkway, Buffalo Grove, IL 60089-4510, (708) 215-5111