

# **RAIDERS**

of the  
**LOST ARK.**  
*tip sheet*

## **WARNING:**

**CONTAINS CLUES TO THE RAIDERS OF THE LOST ARK\*  
ADVENTURE GAME. DO NOT READ BEFORE THOR-  
OUGHLY READING YOUR INSTRUCTION MANUAL.**

## **GET TO THE LOST ARK!**

You are Indiana Jones\*, on the most important mission of your life — to find the fabled lost Ark of the Covenant. It's hidden in an Egyptian desert, inside a towering mesa. How will you find it?

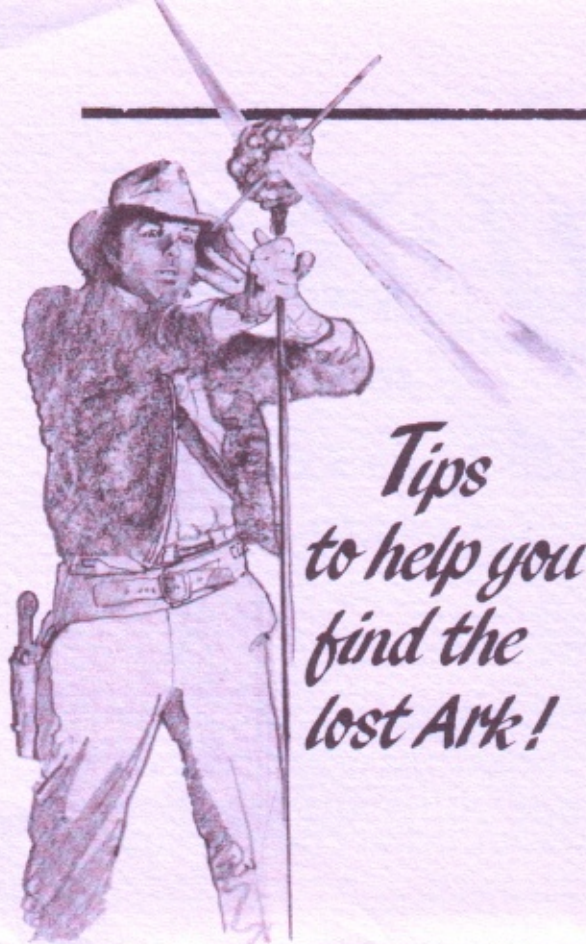
The path to the lost Ark is not easy. You must break into an ancient Temple, pick up Temple Treasures, find the hidden Map Room, and even barter with crafty sheiks. There are dangers every step of the way — will you make it?

Here are some tips to help you on your journey:

\* Trademark & © LUCASFILM (LFL) 1982

ALL RIGHTS RESERVED. Used by ATARI, INC. under license.





*Tips  
to help you  
find the  
lost Ark!*

## **BLOW A HOLE IN THE ENTRANCE ROOM**

Use a grenade to blow a hole in the side of the Entrance Room. Walk to the right side of the room, select the grenade in your inventory strip, and press your right controller button. Kaboom! You're in!

Avoid losing a life by escaping down to the Marketplace **before** the hand grenade explodes. Then walk back into the Entrance Room. A hole will be blown in the wall. Watch out for snakes, Indy!

ENTRANCE ROOM

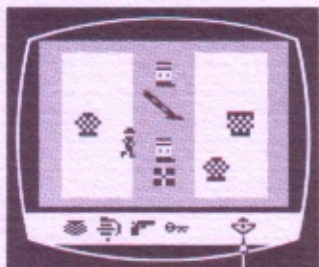


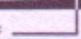
## **FIND THE HEAD TO THE STAFF OF RA**

To learn the location of the Ark, you must first find the head to the Staff of Ra. It is hidden inside one of the baskets in the Marketplace, and only appears occasionally. You must keep touching the baskets until the head to the Staff magically appears.

The head to the Staff of Ra is used later in the game, when you've reached the secret Map Room.

MARKETPLACE



Head to the Staff 

## **SHOOT YOUR WAY OUT OF DUNGEONS**

If you're in a dungeon, don't starve — shoot your way out! Use your whip or gun to knock holes in the dungeon walls. You must be in motion to use your weapons — but stop immediately after you shoot. If you bump into a wall after you've shot holes in it, the wall seals up. Try again!

ROOM OF THE SHINING LIGHT





## CROSS THE MESA FIELD

Use the Ankh (in any room **except** the Temple Treasure Room) to transport yourself to the Mesa Field. A grappling hook will be whirling around you. Move your right Joy-stick forward to swing the hook out; move it toward you to bring the hook in. To jump to a mesa, move the hook directly over the mesa top and press the right controller button.

Jump **down** the Mesa Field, toward the Map Room. When you reach the last mesa, drop the Ankh, center yourself on the mesa, and walk down into the next room.

MESA FIELD

Marketplace side



Map Room side

## UNLOCKING THE MAP ROOM

Use your key to find and enter the Map Room. The Map Room is invisible until you reach the entrance while holding the key. Suddenly, the room will appear. Keep holding the key until you center yourself on the pedestal, then select the head to the Staff of Ra and wait until sunrise. The secret of the lost Ark's location will soon be yours!

MAP ROOM



Pedestal

## BUY A SHOVEL

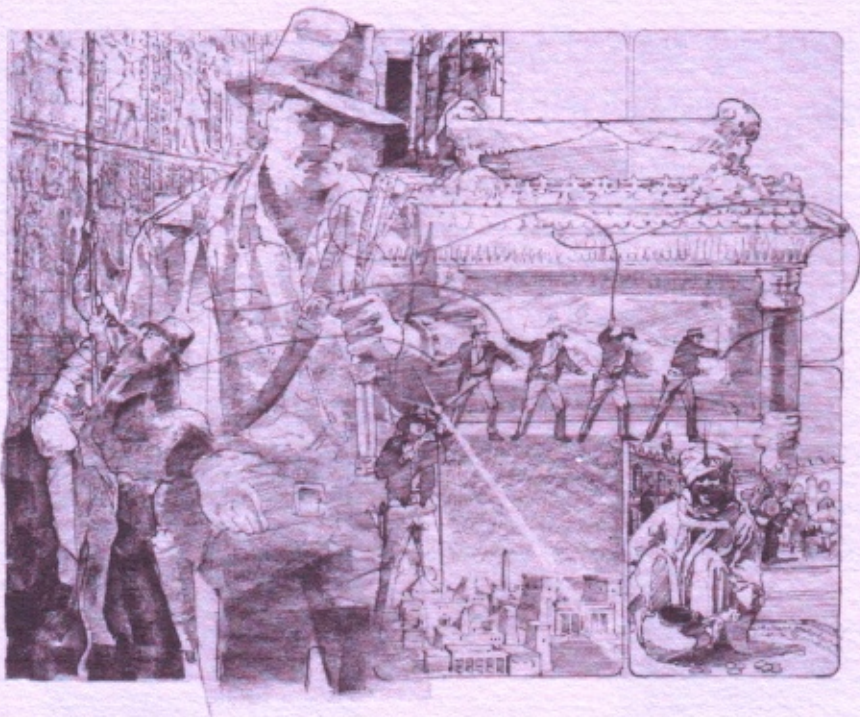
You'll need to visit the Black Market to buy a shovel for your search. A hard-bargaining sheik is selling one at the bottom of the Black Market. Buy the shovel by dropping TWO baskets of coins while standing in front of the shovel. You must be touching part of the shovel to buy it, and you must **not** be touching the sheik. He will be insulted if you touch him while you drop your coins, and will refuse to sell you the shovel.

BLACK MARKET



Shovel





One last hint to help lead you to the Ark:

*With baskets of coins are parachutes bought;  
to bring you closer to the treasure sought.*

If you still have trouble finding the lost Ark, a solution to the Raiders of the Lost Ark adventure game is available. Call Atari Customer Service at (800) 672-1404 (in California), or (800) 538-8543 (in the continental United States).